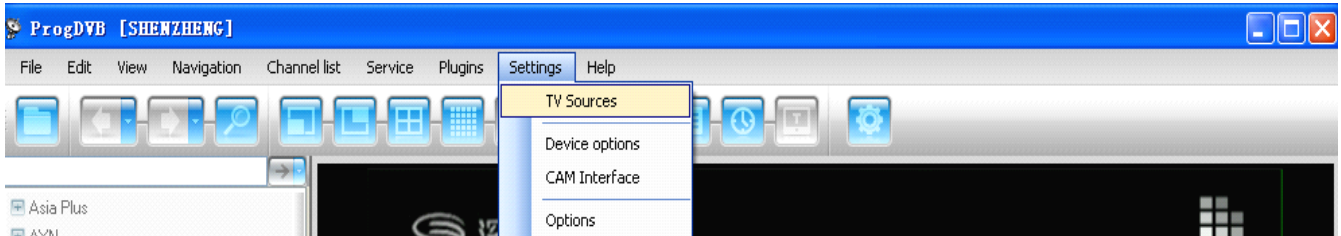


ProgDVB Setting for DVBSky S2 Card/Box

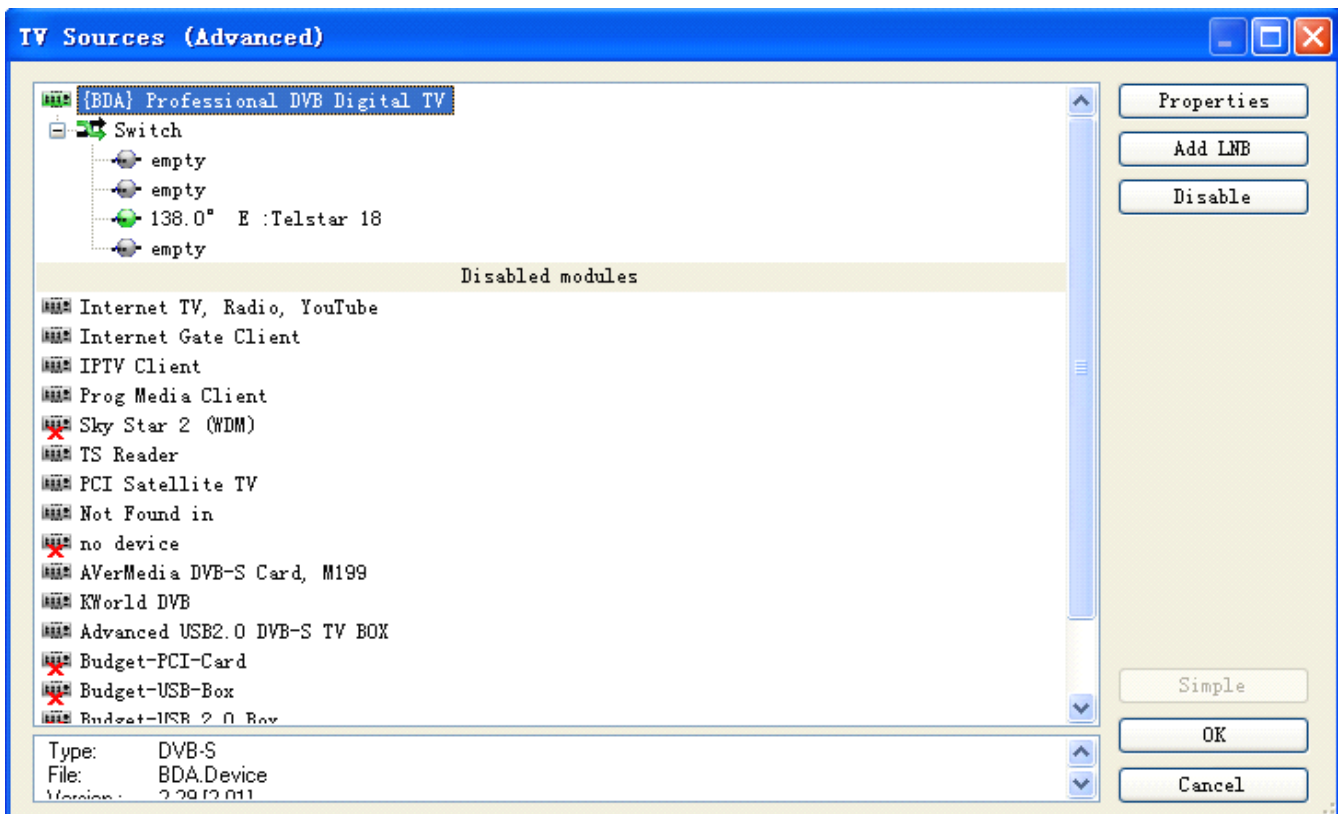
(Apply for ProgDVB 6.60 above)

TV Sources Settings

1) Select Setting->TV Sources.



2) Select { BDA } Professional DVB Digital TV. Then configure LNB and switches.



BDA Options

Click TV Sources Properties button, then select Microsoft compliant BDA driver :

