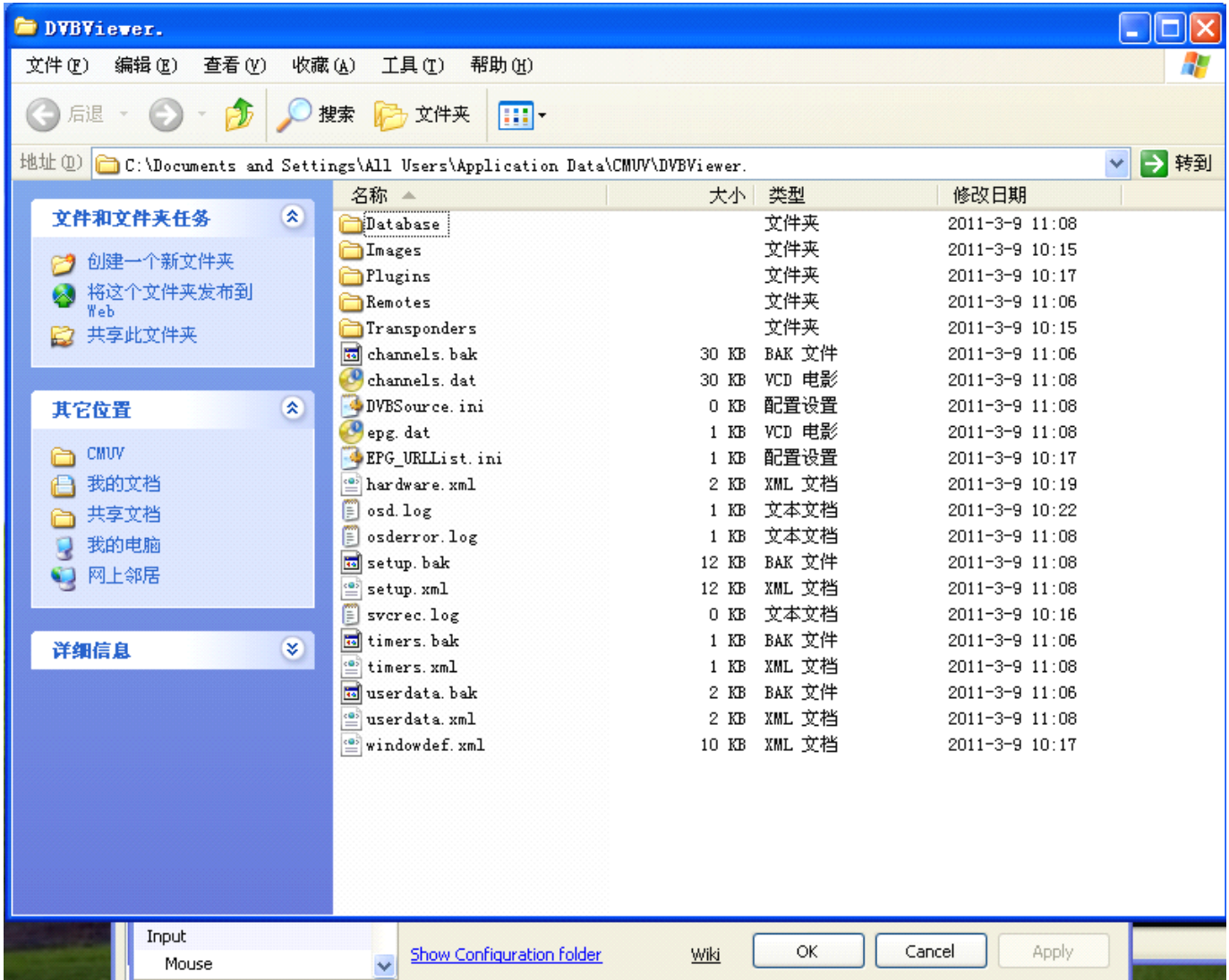


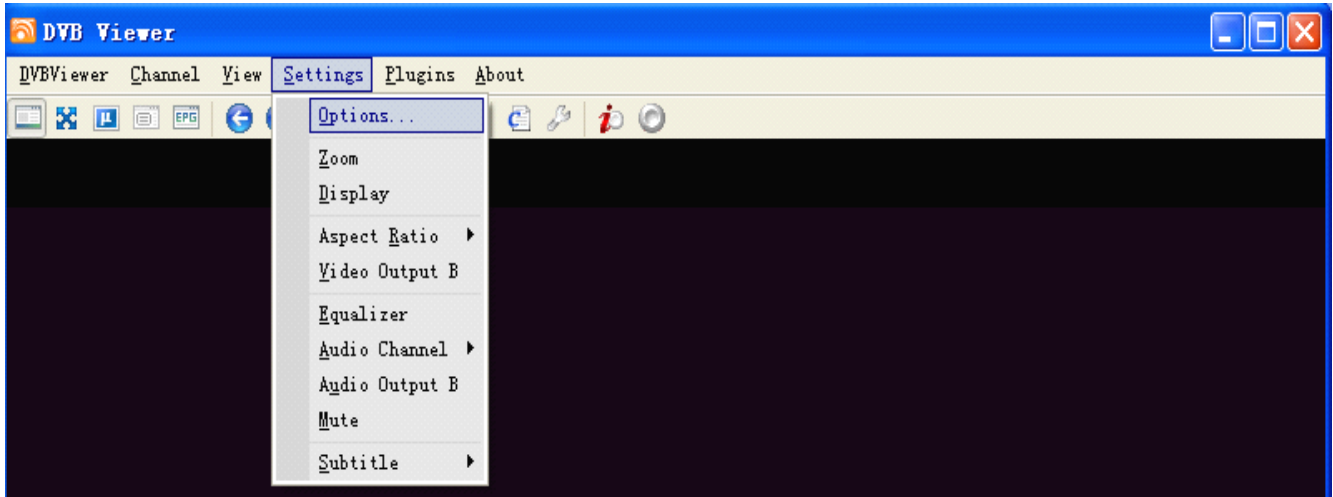
DVBViewer Plugin for DVBSky S2 Card/Box

Remote Control Plugin Configuration

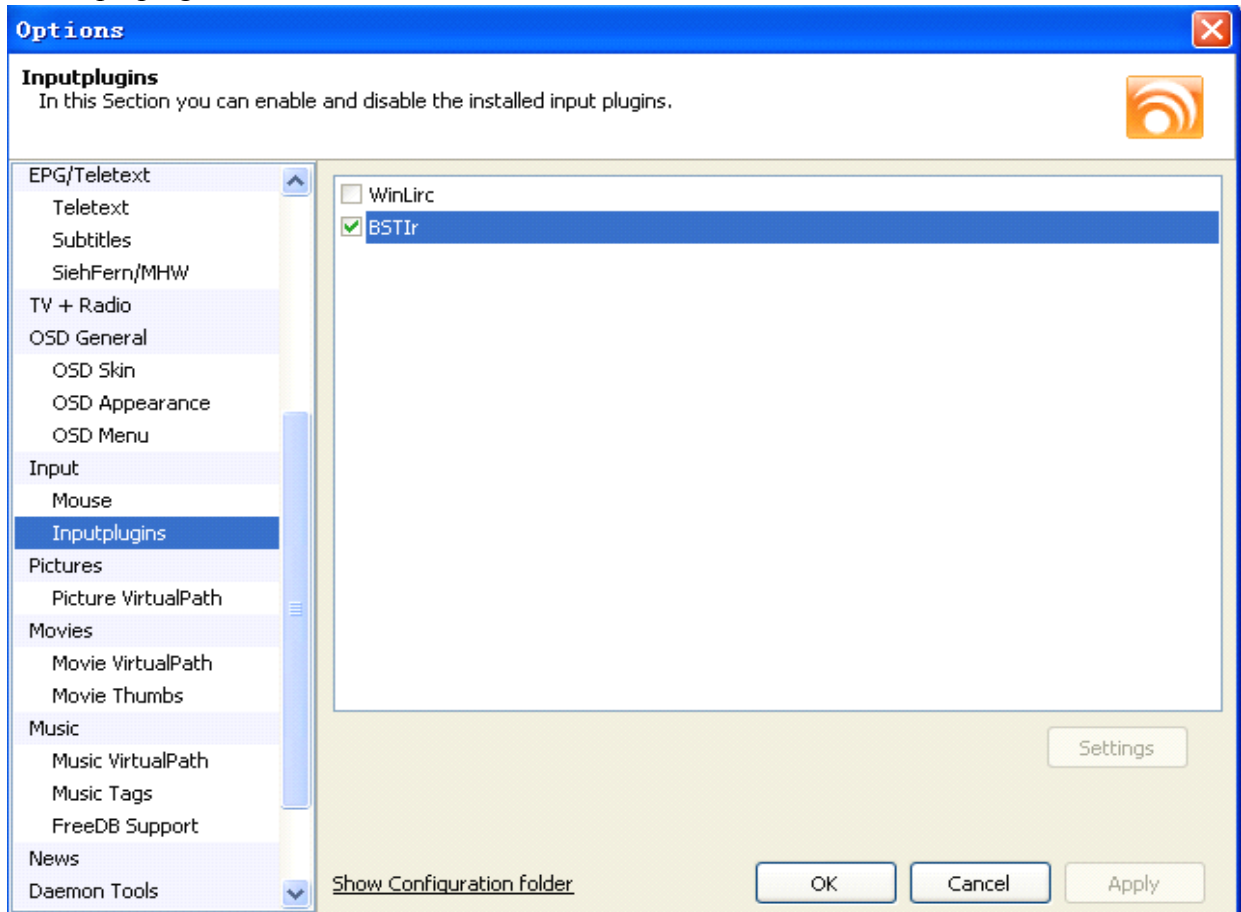
1) Close DVBViewer, copy "BstPlugin.dll" in the "DVBViewer_plugin.zip" to "DVBViewer\Plugins" directory. Copy "default_BSTIr.remote" to Remotes directory under DVBViewer configuration folder.



2) Start DVBCViewer, enter Options setting.

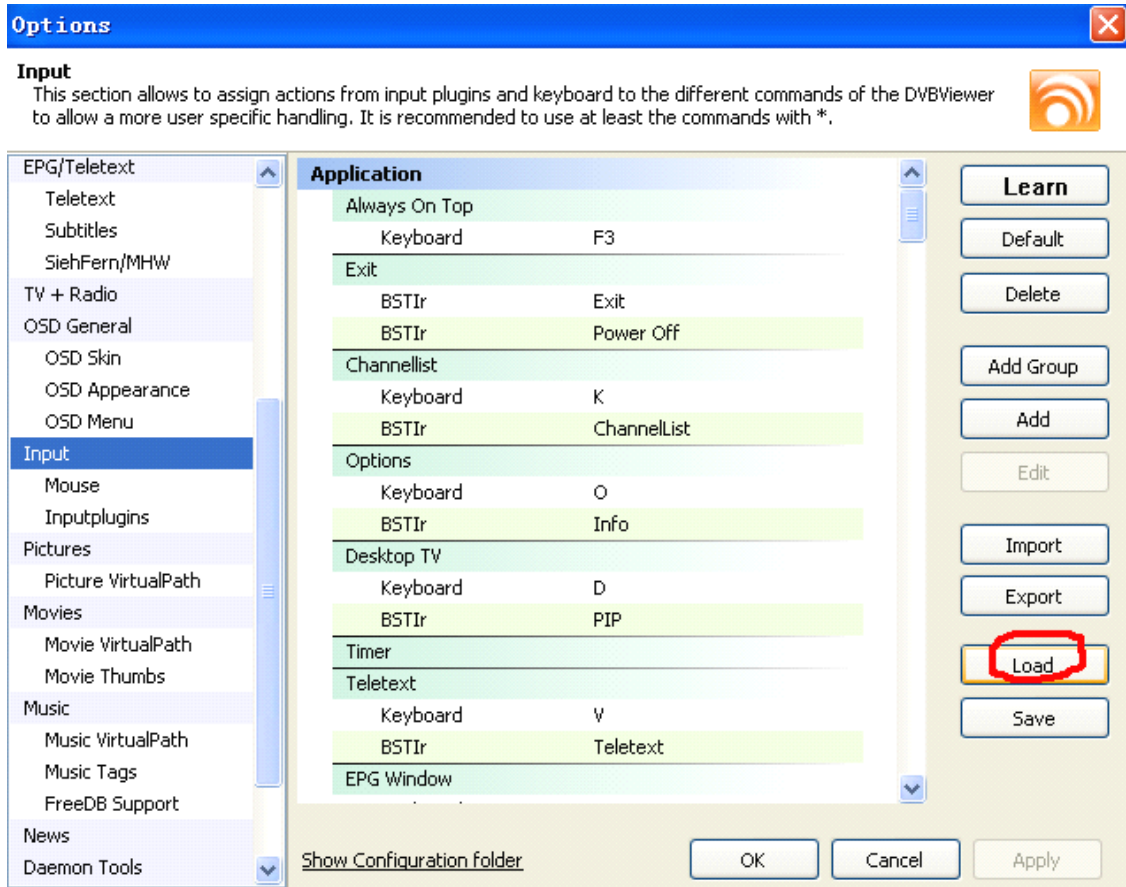


3) Select Inputplugins:



Select "BSTIr" item.(If you not find this item, maybe you forget to copy the plugins.)
Click Apply button.

4) Select Input:



Click Load button, then select default_BSTIr.remote file.

