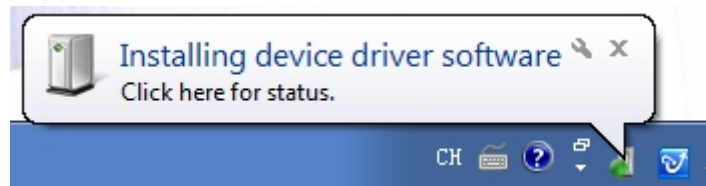


DVBSky DVB-S2/T2/C Card/Box Installation Guide

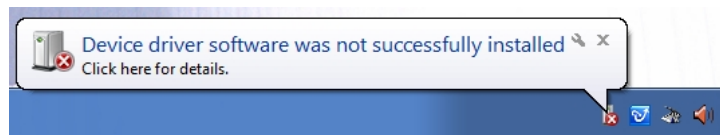
Attention: Please power off the computer before install the internal cards, otherwires you will break your computer or internal cards.

1. Driver Installation

1) After install the PCIe card or plug the USB box, Windows will indicate that the new hardware is found now.



If you have not installed such driver ,the computer will display the following



2) Insert the installation CD, it will run automatically.

If autorun function is disable by User, please click the "autorun.exe" in the CD directory.

Name	Date modified	Type
Files Currently on the Disc (8)		
AutoPlay	2014/7/19 13:57	File folder
Driver	2014/7/19 13:57	File folder
Linux	2014/7/19 13:57	File folder
Plugins	2014/7/19 13:57	File folder
Software	2014/7/19 13:57	File folder
Users Manual	2014/7/19 13:57	File folder
autorun	2005/9/15 19:00	Application
autorun	2014/7/19 13:57	Setup Information

3) Install the driver.



"Install PCI driver" to install PCI card driver(S830).

"Install PCIe Driver" to install PCIe card driver(S950/S950C/S952/T9580/T982/T980C).

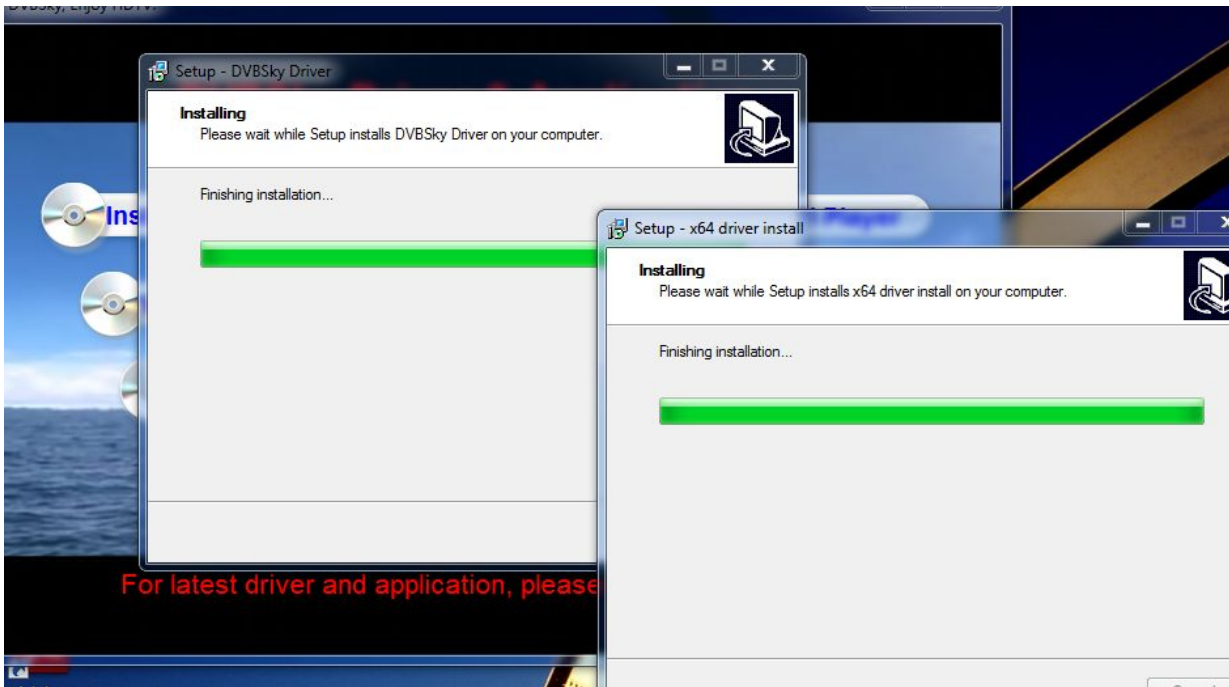
"Install USB Driver" to install USB box driver(S960/S960C/T680C/T330).

For example: to install the PCIe driver.

3.1) Driver install Setup Wizard, click "Next".



3.2) Driver will be installed automatically



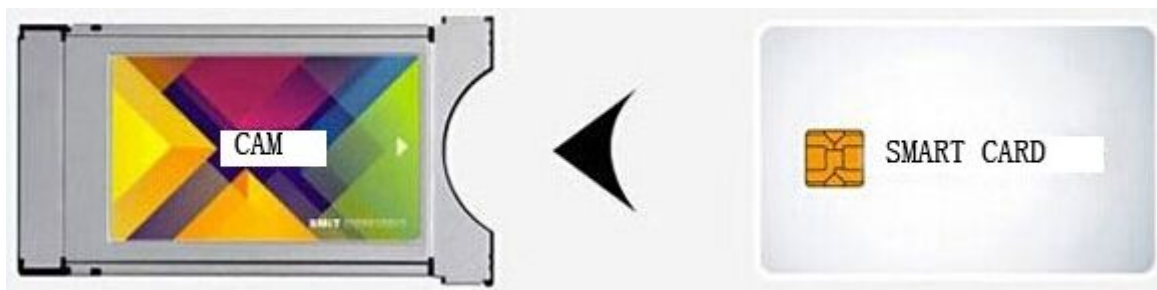
3.3) Wait some minutes, the Setup Wizard will show the finish page.



2. Hardware Setup hints

1) How to connect the CAM

First you need to insert the smart card into the cam card



Then insert the cam card into the product in the right way





3. DVBSky Player Instructions

1) Install DVBSky Player in CD

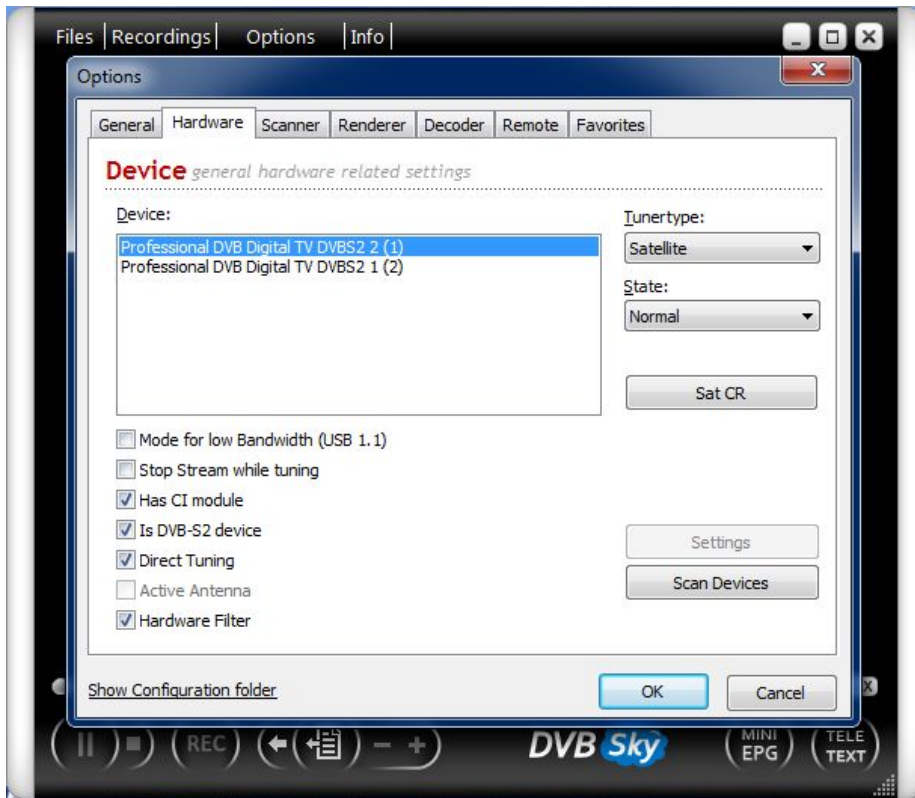


Click the Next button until it display finish.



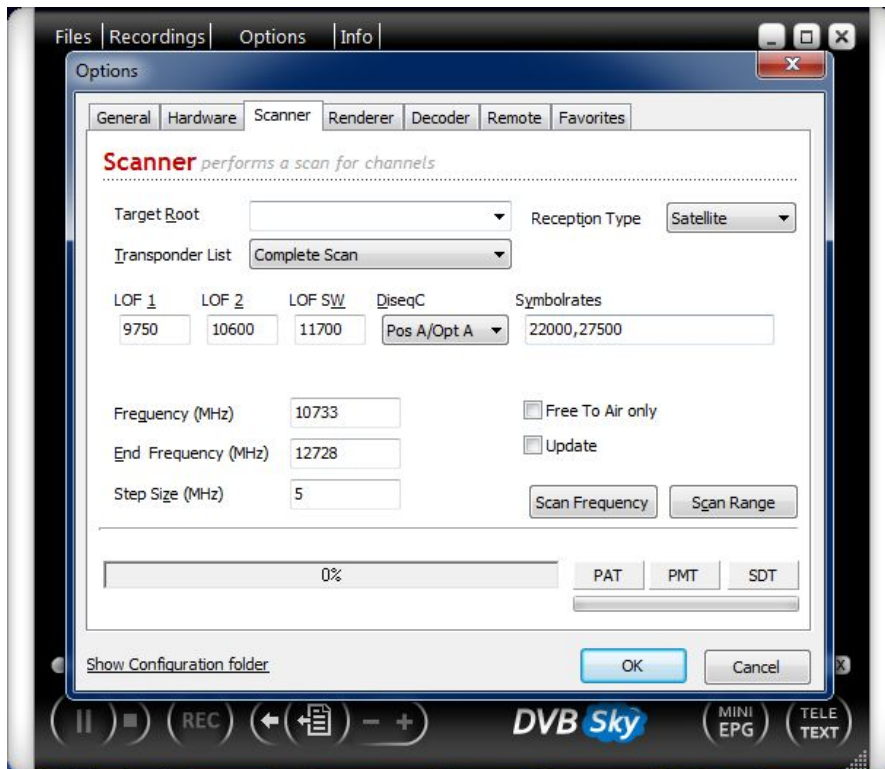
2) Scan Hardware

Open player on desktop,click Options/Hardware/Scan Devices

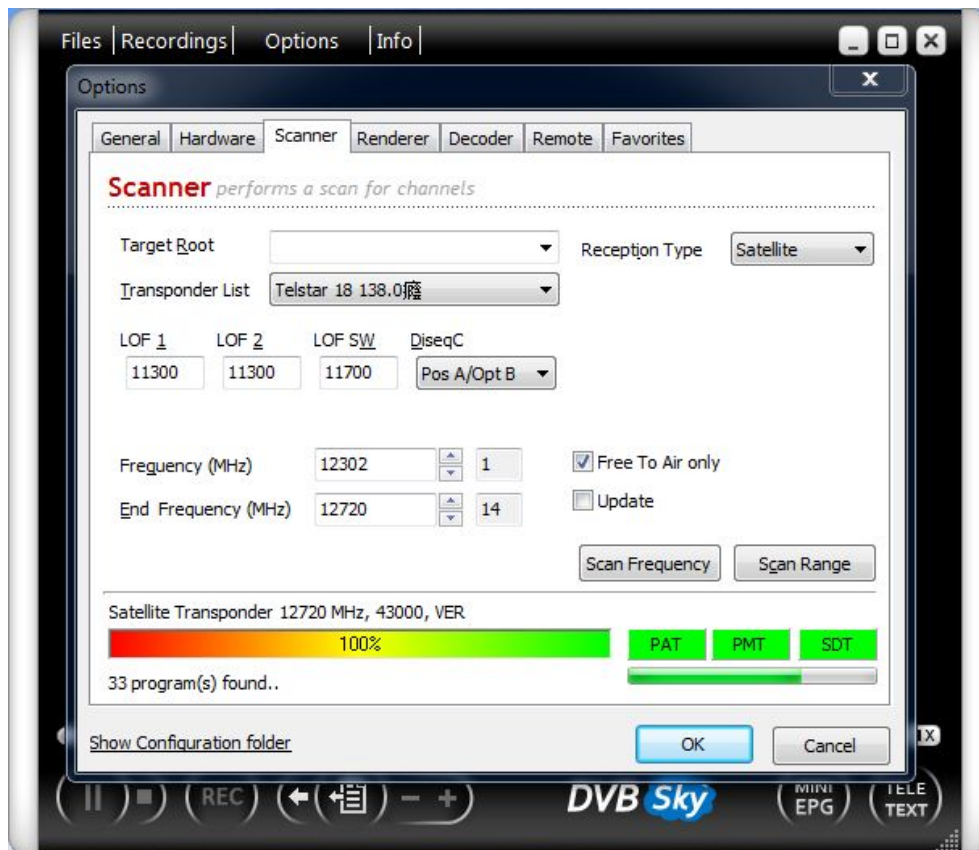
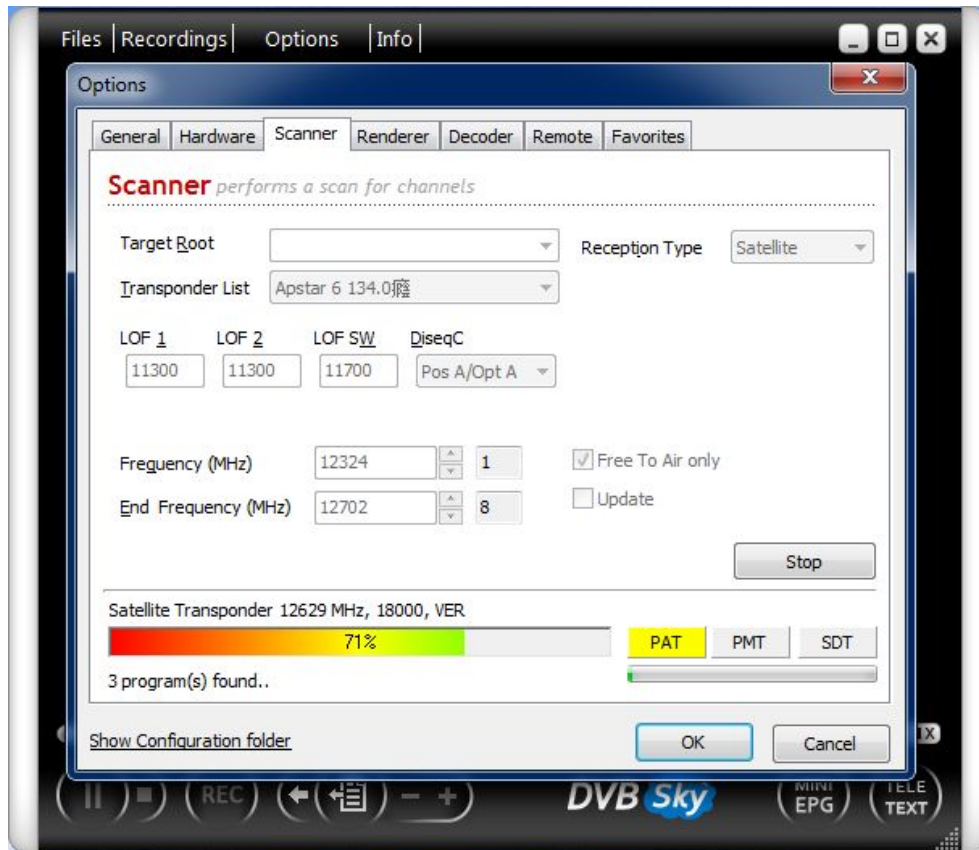


3) Scan channels

The antenna must be installed and connected before you do this.
Click Options/Scanner/, you need to set related parameters



For example: Scan satellite program



Scan terrestrial program

