



## **Manual for DVBSky Player**

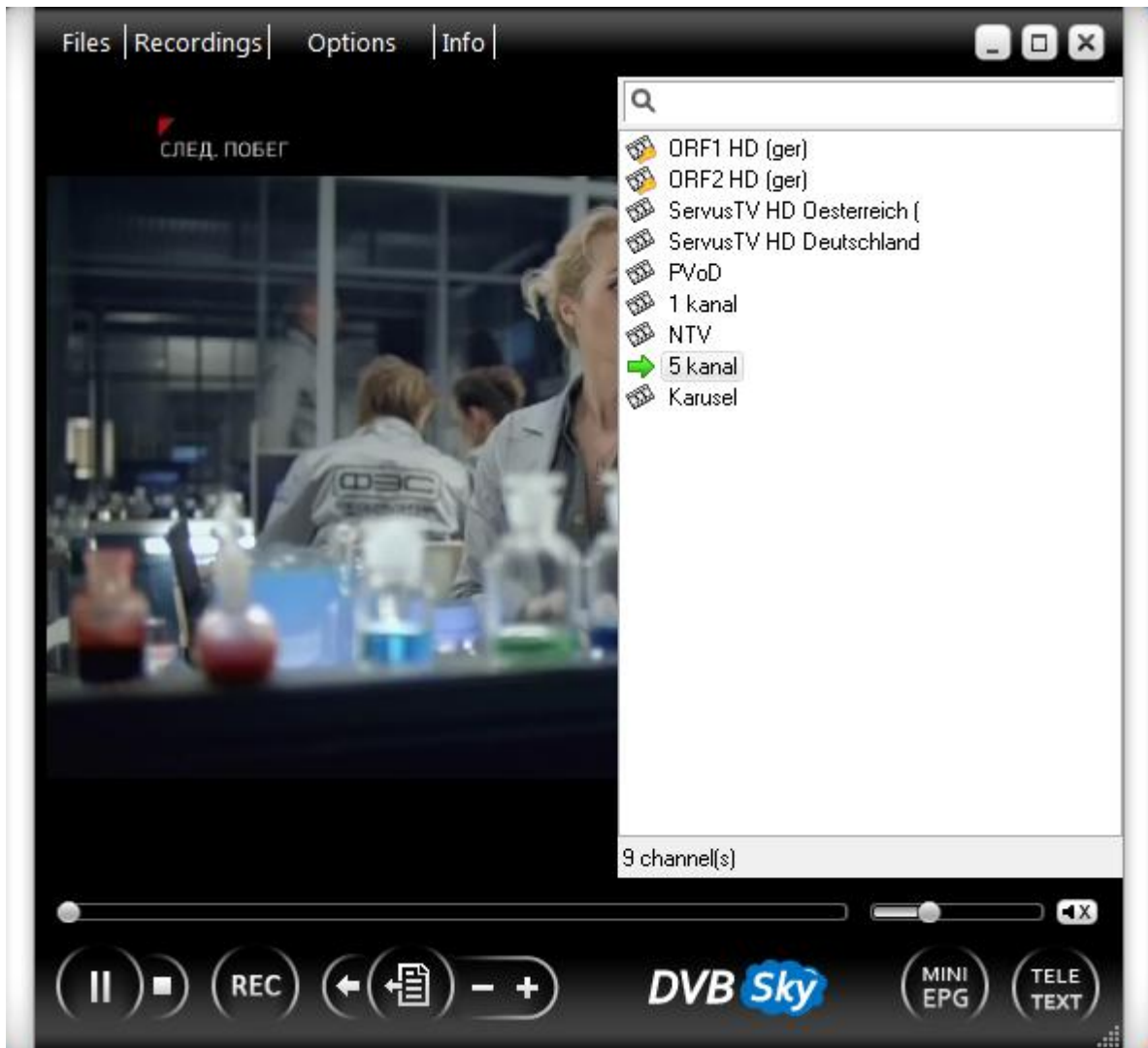
# Manual for DVBSky Player

## Index

1. Run “DVBSky Player”-----	3
2. General configuration -----	4
3. Scan Hardware Device -----	5
4. Unicable settings -----	7
5. Scan channels -----	8
6. Renderer -----	10
7. Decoder -----	11
8. Remote Control -----	12
9. Favorite list -----	13
10. Record channel -----	14
11. Playback media files -----	15
12. CAM interface-----	16
13. Add new transponder-----	17
14. Further support -----	20

## 1. Run “DVBSky Player”

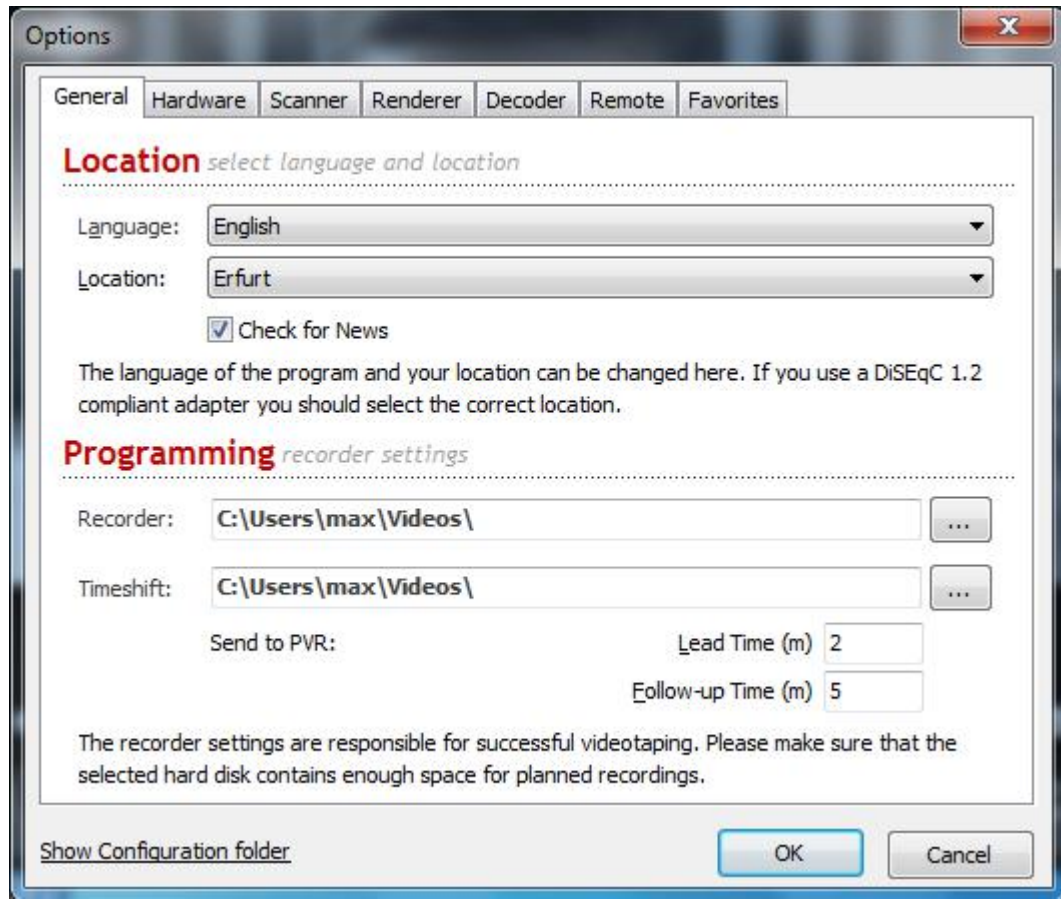
To run “DVBSky Player”, please open “start menu” and select “DVBSky Player”, or double click the “DVBSky Player” icon on the desktop.



When moving the cursor to the right side of “DVBSky Player” main window, the channel list will pop up. The left window will play the program as the desired program is selected in the channel list.

## 2. General configuration

Click the “Options” on the top of main window, or click right button of Mouse then select “Options...”, the Options dialog is popped up. Select “General” configure page.

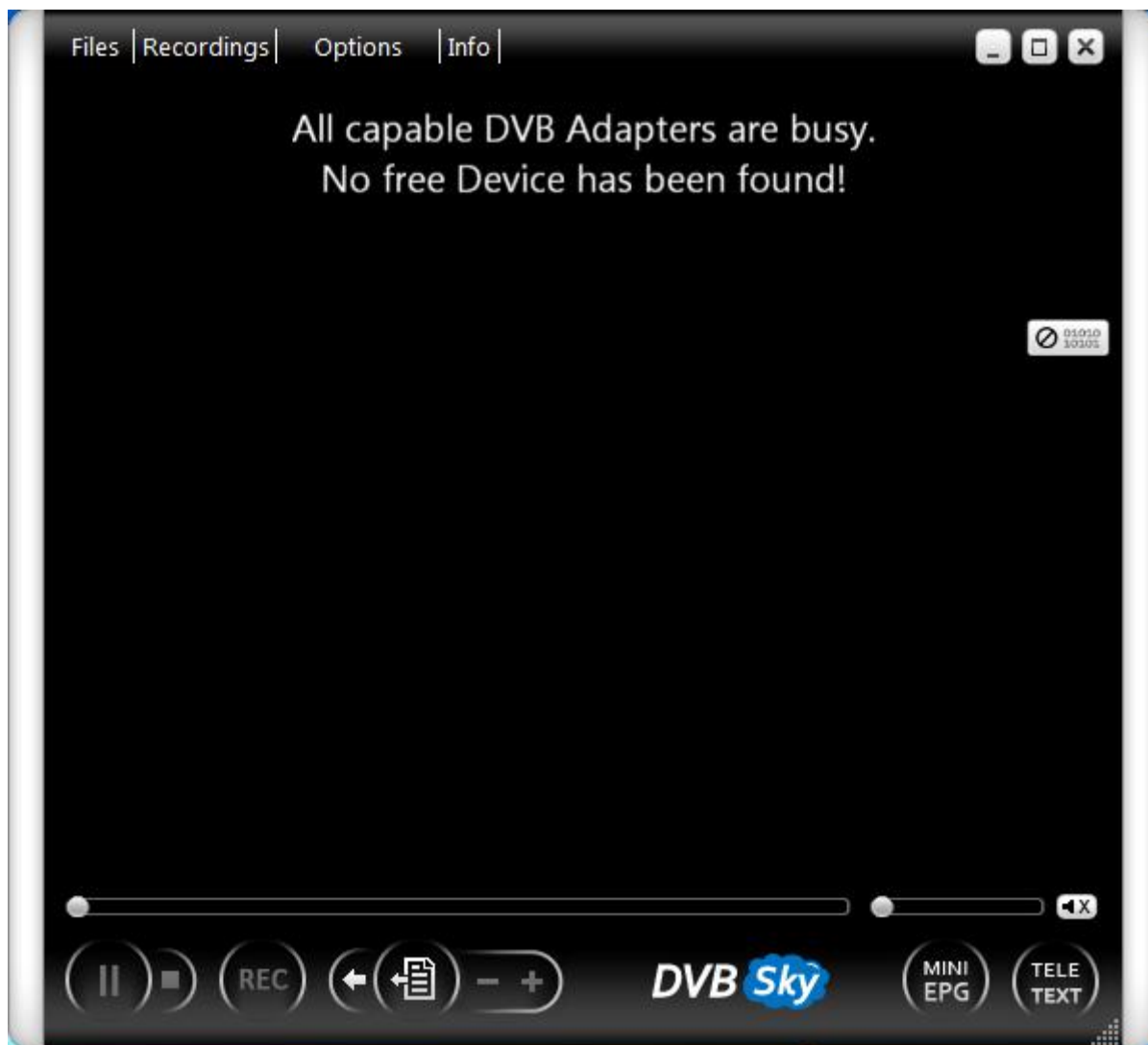


On this page, Language, Location and file location for recorder and Timeshift can be selected. The time configuration of Timeshift can be configured too.

### 3. Scan Hardware Device

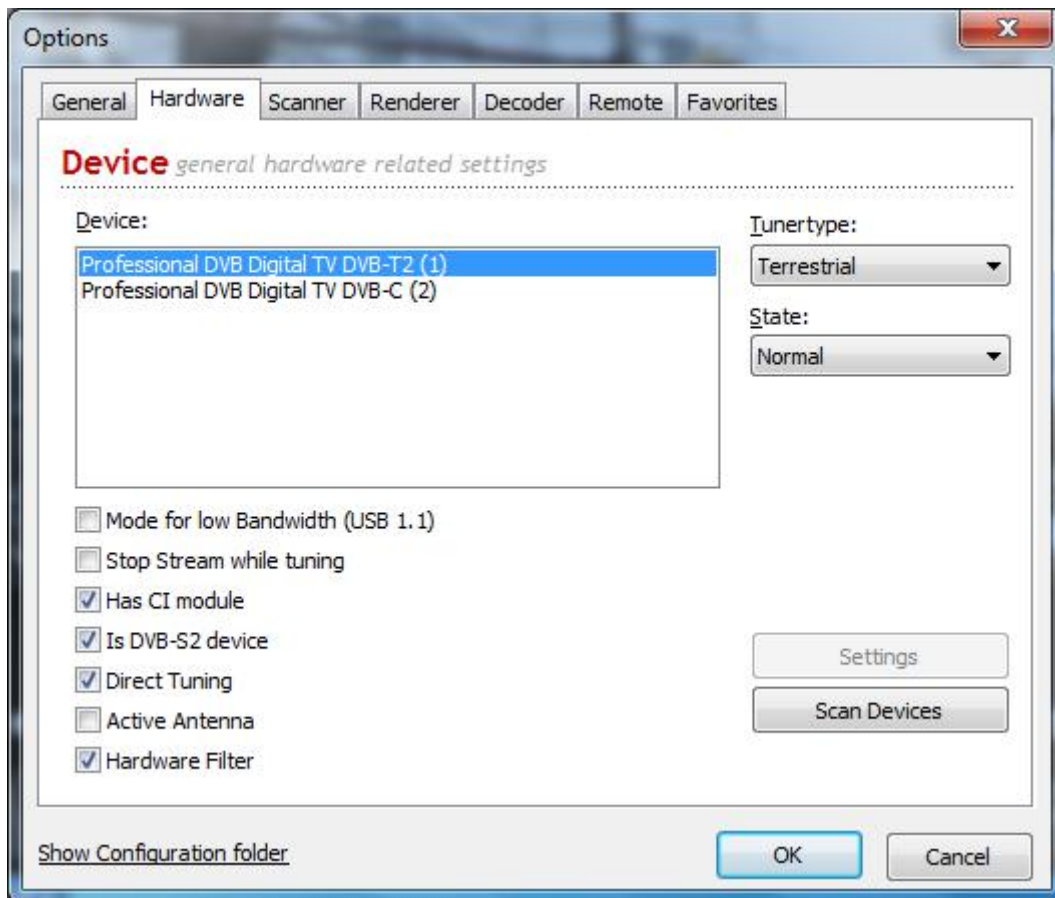
The player will find all hardware devices from DVBSky at the first run time automatically, then it saves the hardware devices information for later time.

Sometime, the player shows “All capable DVB Adapters are busy. No free Device have been found”. Or the new device is added in the system. It need open Hardware configuration to scan and check.



Click the “Options” on the top of main window, or click right button of Mouse then select “Options...”, the Options dialog is popped up. Select “Hardware”

configure page.



Click “Scan Devices” button, all supported devices are listed in the Device list.

Check options for this device, then click “OK” button to save device information.

“Tunertype” has **Cable, Satellite, Terrestrial, ATSC**. This information is predefined by hardware device.

“State” has three options:

**Do not use:** the player find this device but will not use it.

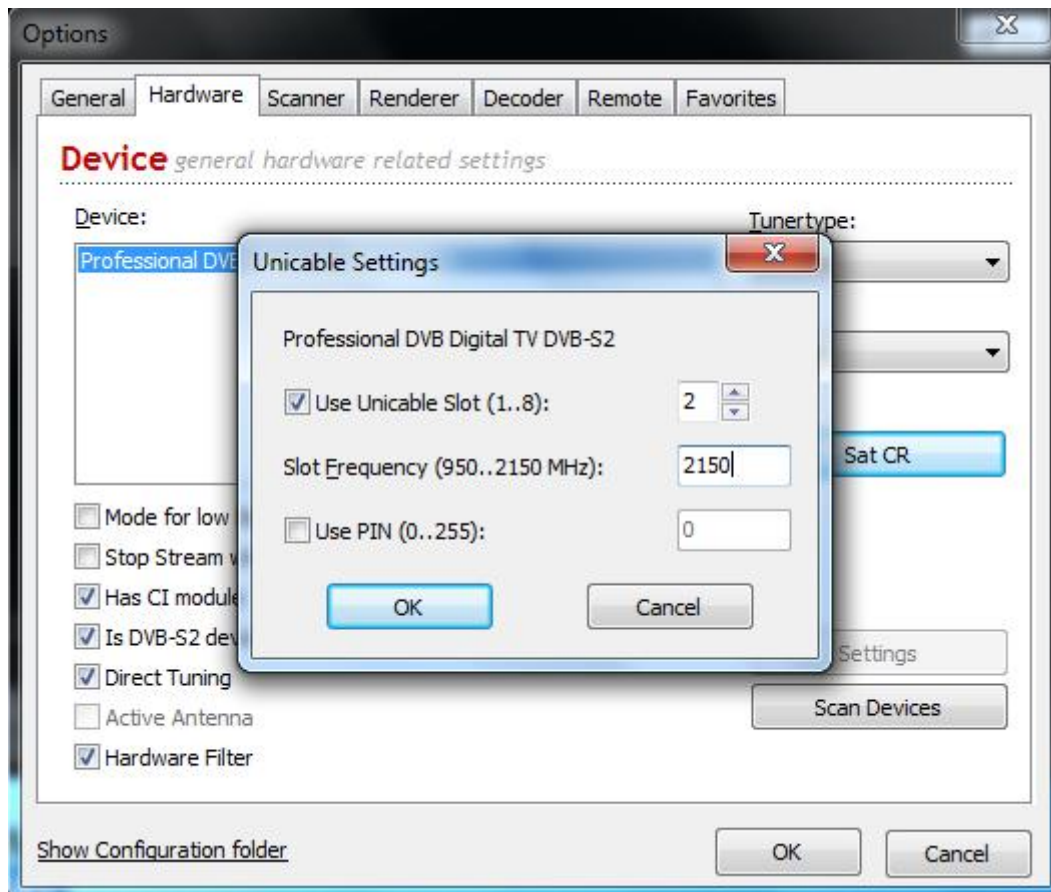
**Normal:** the player will use this device normally. It is default.

**Preferred:** the player will use this device first if more than two same

“Tunertype” device are found.

## 4. Unicable settings

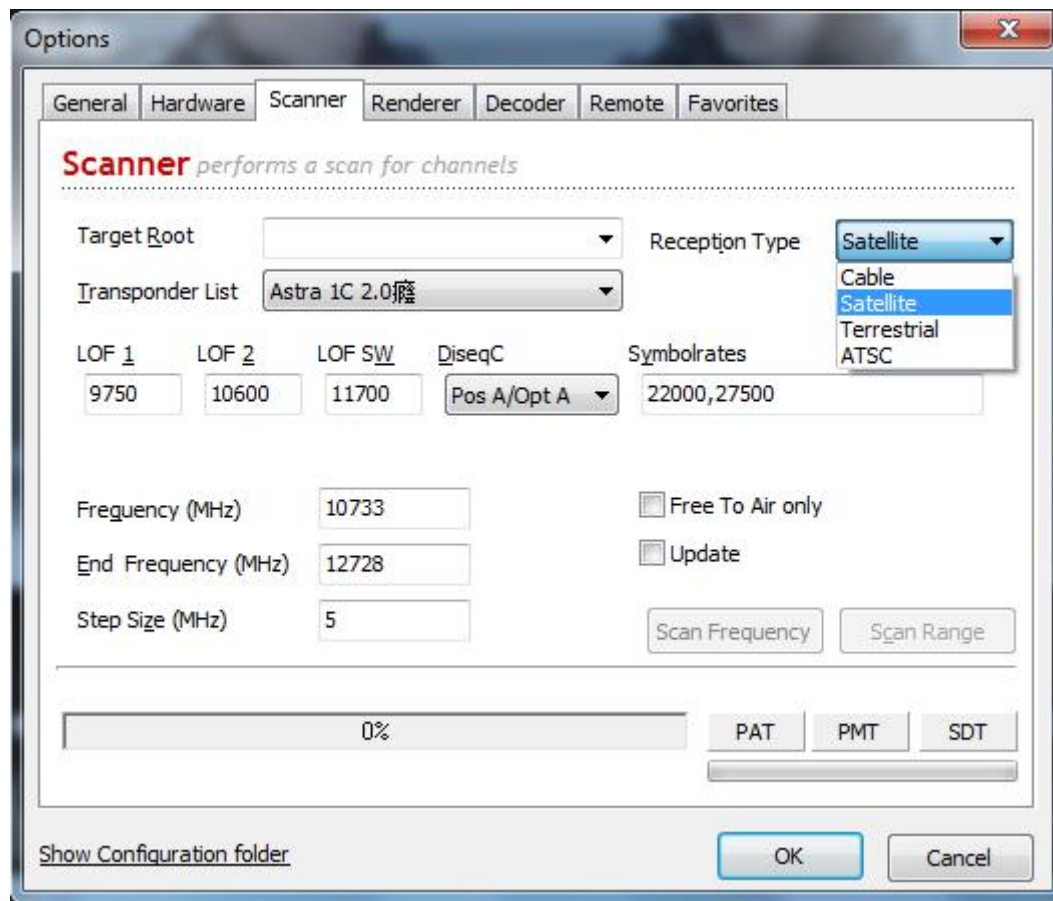
If the hardware device supports Satellite type, the hardware configure page has additional “Sat CR” button.



Click “Sat CR” button, “Unicable Settings” dialog is popped up. Enter the corresponding parameter of the unicable device in this dialog and click “OK”.

## 5. Scan channels

Click the “Options” on the top of main window, or click right button of Mouse then select “Options...”, the Options dialog is popped up. Select “Scanner” configure page.



**Target Root:** select the existing folder or enter new name for the coming folder.

The scanning channel result will be listed in this folder in channel list.

**Reception Type:** select the corresponding signal to receive.

**Transponder List:** select the satellite or country. Behind these are predefined frequency and DVB parameters tables.

**LOF 1/LOF 2/ LOF SW/DiseqC:** set the value of the installed satellite antenna.

Click “Scan Frequency” button to scan the channels on the one frequency point.

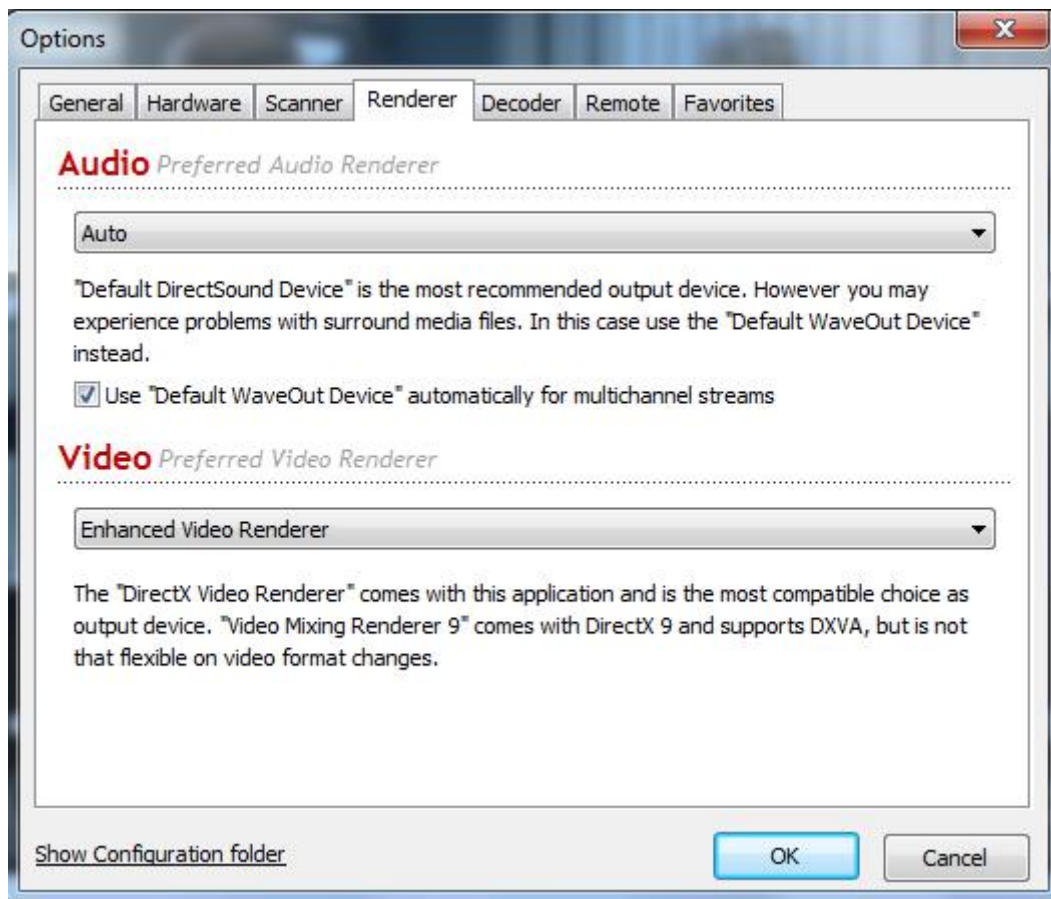


Click “Scan Range” button to scan all channels from “Frequency” to “End Frequency” points. The range is predefined by the transponder.

The progress bar show the percentage of scanning. The channel is found when PAT/PMT/SDT turn to green color. When scanning is finished, programs found are showed. Click “OK” to save the scanning result in the folder of channel list.

## 6. Renderer

If the video and audio playback have some problem, click the “Options” on the top of main window, or click right button of Mouse then select “Options...”, the Options dialog is popped up. Select “Renderer” configure page.

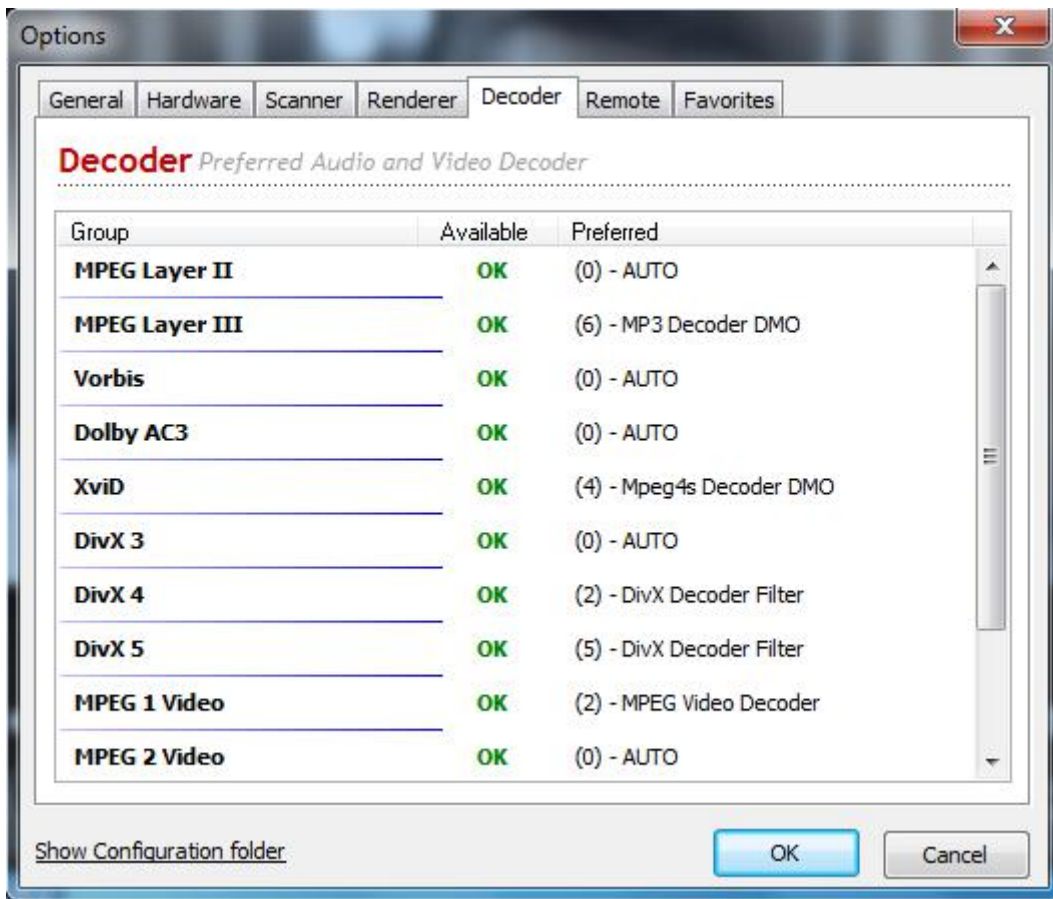


“Auto” selection is set for Audio by default. Please try the other selection if the problem occurs. Video selection is determined by Graphic card and software decoder in the system.

## 7. Decoder

The program is compressed in the digital stream. It need Decoder to do reverse jobs. The decoders are not bundled with the player. Some decoders are already existing in the system, some decoders need be installed separately.

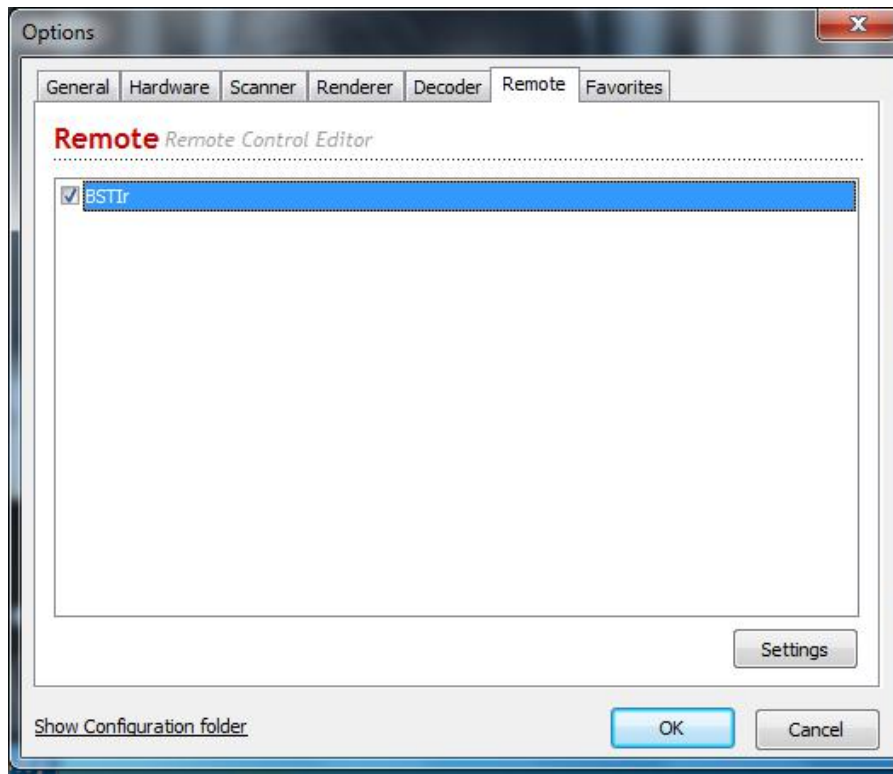
click the “Options” on the top of main window, or click right button of Mouse then select “Options...”, the Options dialog is popped up. Select “Decoder” configure page.



At least the Available decoder for the program should be “OK”. If not, please install the software decoder pack.

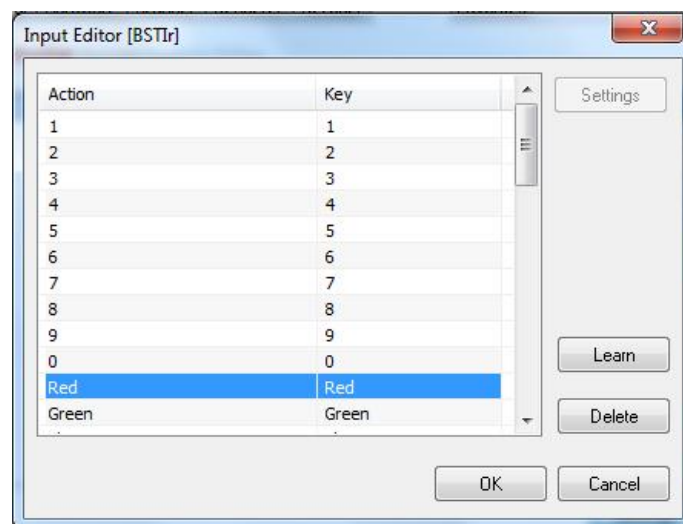
## 8. Remote Control

Click the “Options” on the top of main window, or click right button of Mouse then select “Options...”, the Options dialog is popped up. Select “Remote” configure page.



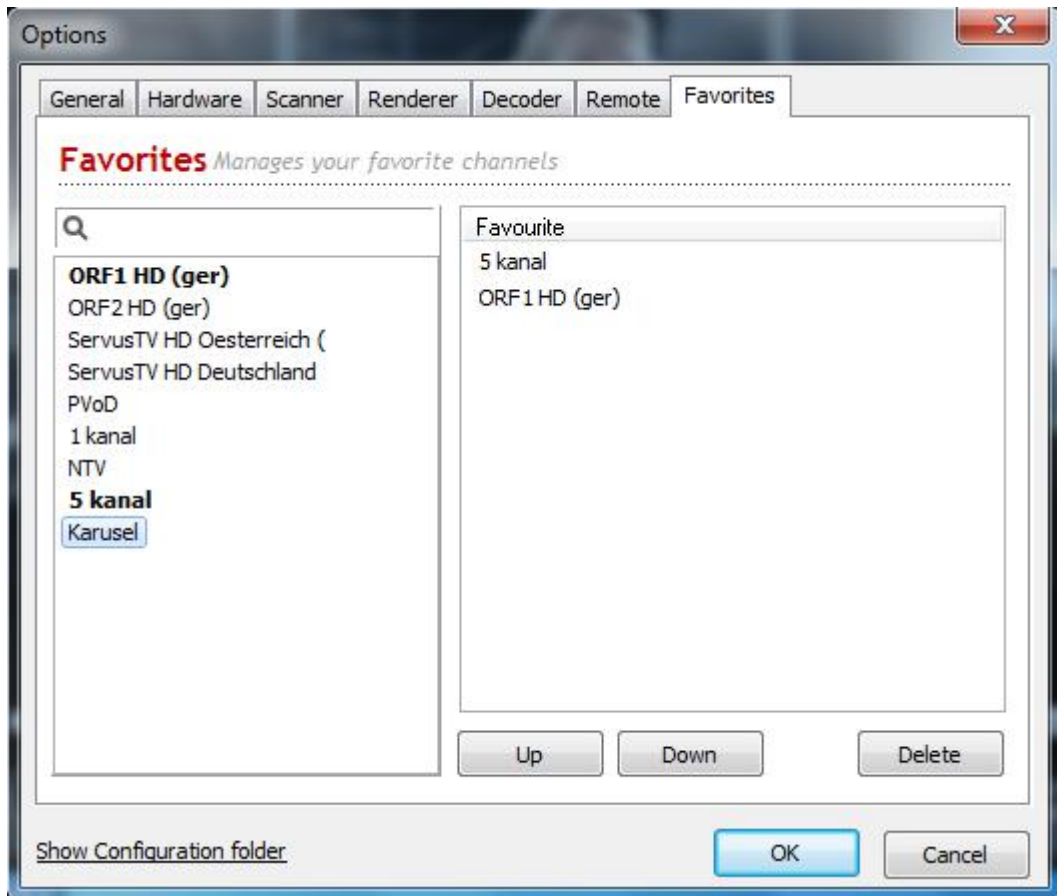
“BSTIr” should be checked to let remote control work.

Some remote keys can be changed by clicking “Settings” button.



## 9. Favorite list

Click the “Options” on the top of main window, or click right button of Mouse then select “Options...”, the Options dialog is popped up. Select “Favorites” configure page.



Select the channel in the left column, then pull it to the right “Favorite” column.

Click “Up” or “Down” button to sort it in the favorite list. Click “OK” to save.

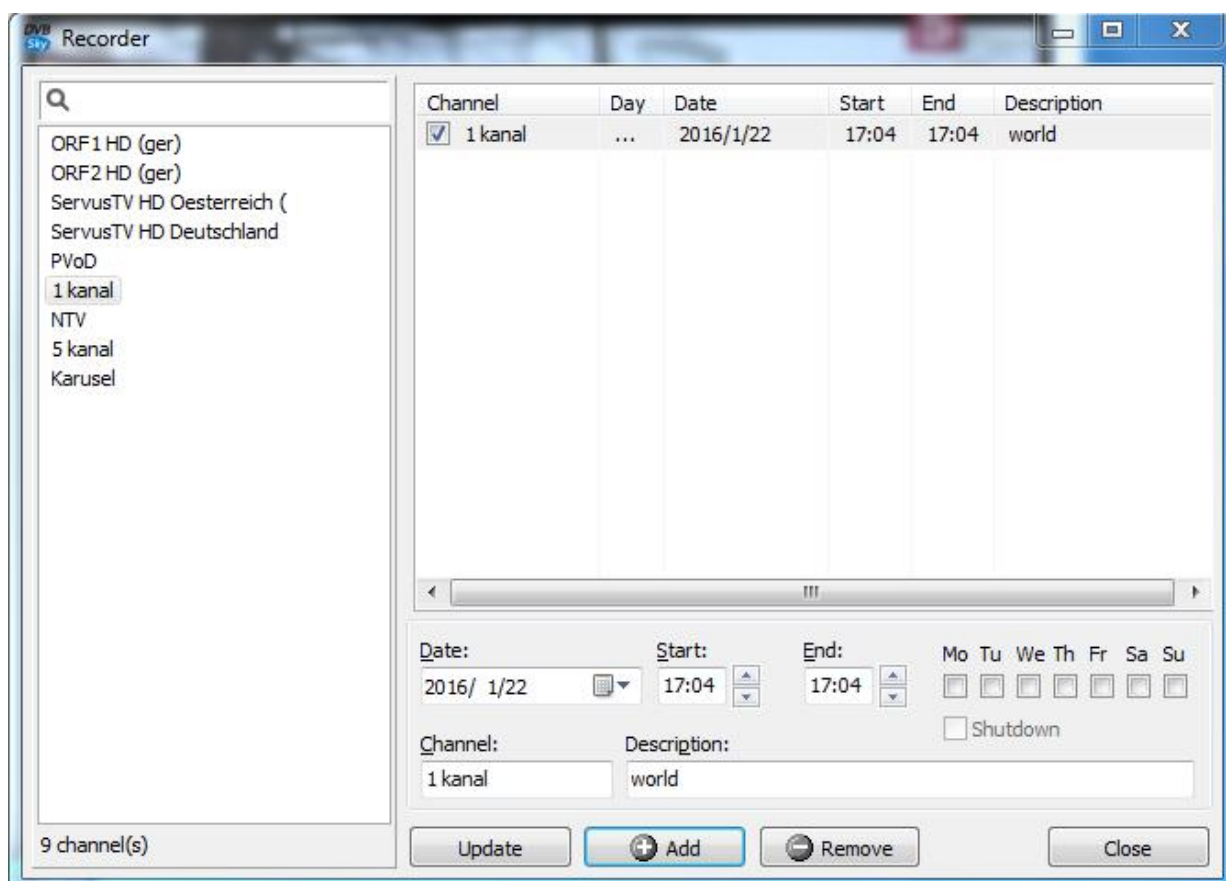
## 10. Record channel

### Instant record:

Click the “REC” button on the bottom of main windows, or “REC” button of control bar in the full screen mode, to record the current channel to the hard disk.

### Schedule record:

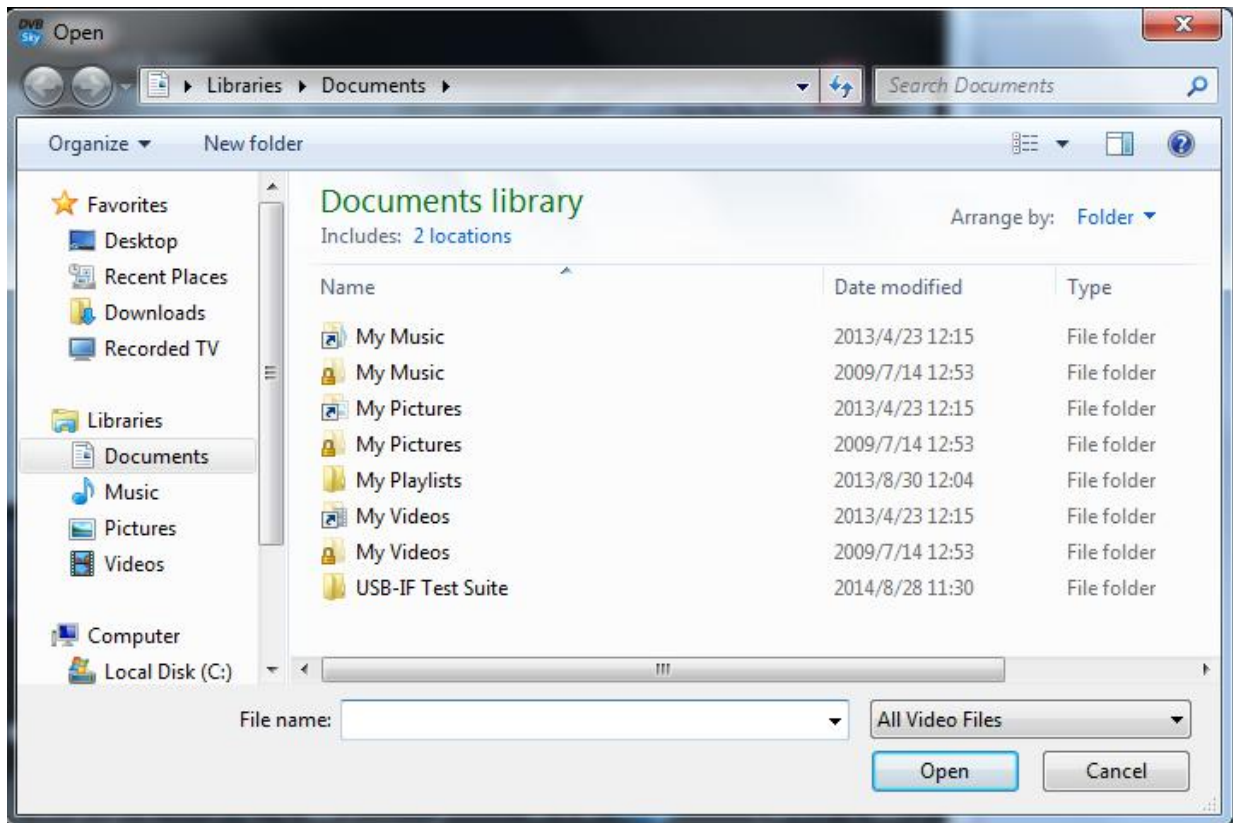
Click the “Recordings” on the top of main window, or click right button of Mouse then select “Recorder Planner...”, the Recorder dialog is popped up.



Select the desired channel and time, then click “Add” button to schedule the recording.

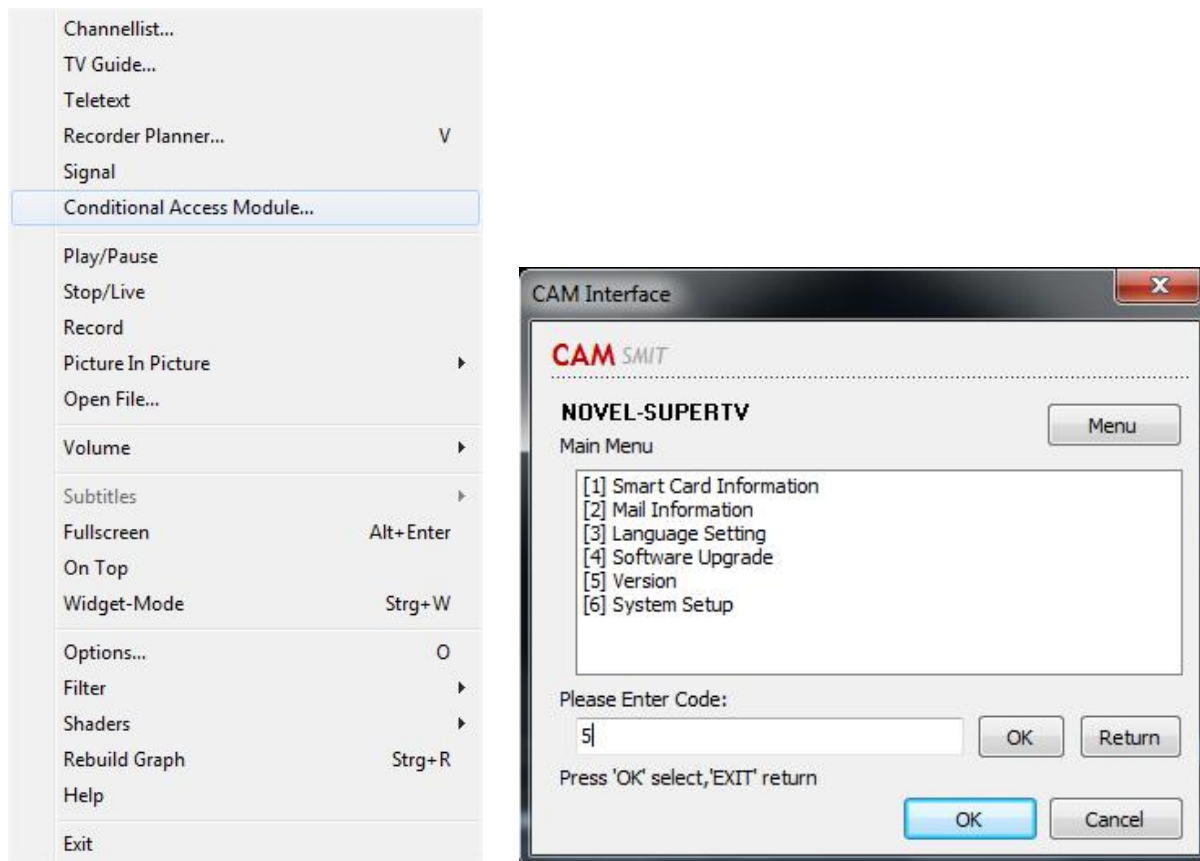
## 11. Playback media files

Click the “Files” on the main window, the Open dialog is popped up. Select the media file then play it in the main window.



## 12. CAM Interface

click right button of Mouse on the main window then select “Conditional Access Module...”, the CAM Interface dialog is popped up.



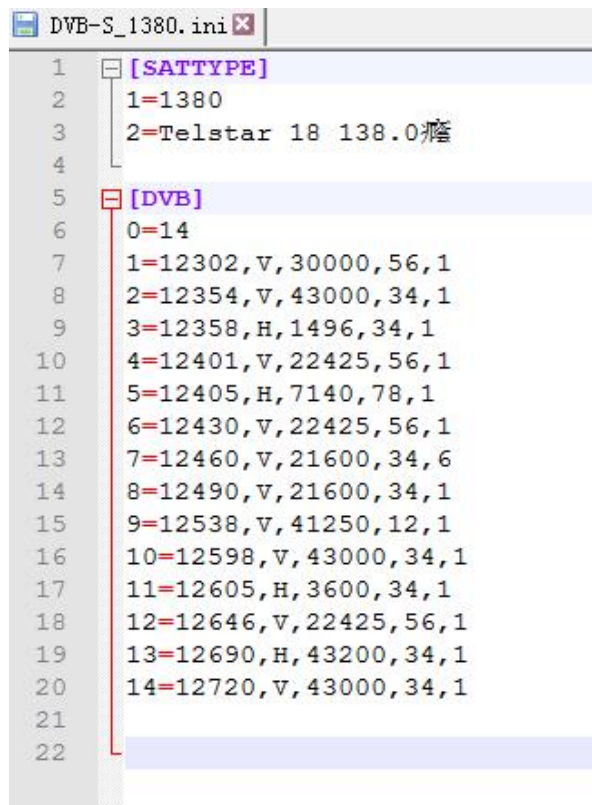
In CAM interface, CAM configure and check can be operated here.



### 13. Add new transponder

If the broadcaster launches a new transponder, the user can edit the transponder list file to add this new transponder.

1>Open transponder list files of DVBSky player installation directory, the default is C:\Program Files (x86)\DVBSky\Transponders. Use a text editor to open the transponder list file, for example we want to add a new transponder into 138E satellite.



```
DVB-S_1380.ini
1 [SATTYPE]
2 1=1380
3 2=Telstar 18 138.0
4
5 [DVB]
6 0=14
7 1=12302,V,30000,56,1
8 2=12354,V,43000,34,1
9 3=12358,H,1496,34,1
10 4=12401,V,22425,56,1
11 5=12405,H,7140,78,1
12 6=12430,V,22425,56,1
13 7=12460,V,21600,34,6
14 8=12490,V,21600,34,1
15 9=12538,V,41250,12,1
16 10=12598,V,43000,34,1
17 11=12605,H,3600,34,1
18 12=12646,V,22425,56,1
19 13=12690,H,43200,34,1
20 14=12720,V,43000,34,1
21
22
```

2>Add new transponder to the end of file, then change the total number of transponders. The changed content looks like as the below, then save the changed file.

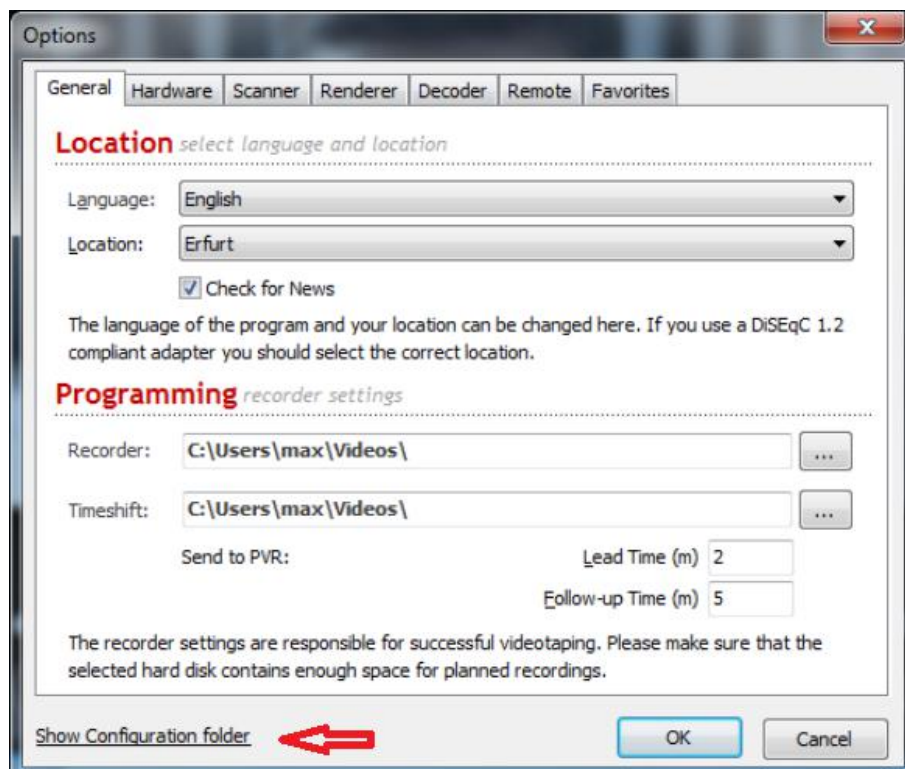
```

DVB-S_1380.ini x
1  [SATTYPE]
2  1=1380
3  2=Telstar 18 138.0
4
5  [DVB]
6  0=15
7  1=12302,V,30000,56,1
8  2=12354,V,43000,34,1
9  3=12358,H,1496,34,1
10 4=12401,V,22425,56,1
11 5=12405,H,7140,78,1
12 6=12430,V,22425,56,1
13 7=12460,V,21600,34,6
14 8=12490,V,21600,34,1
15 9=12538,V,41250,12,1
16 10=12598,V,43000,34,1
17 11=12605,H,3600,34,1
18 12=12646,V,22425,56,1
19 13=12690,H,43200,34,1
20 14=12720,V,43000,34,1
21 15=12429,H,3330,12,1
22

```

3>Copy the updated file to the configuration directory.

Start DVBSky player, click the “Options” on the top of main window, or click right button of Mouse then select “Options...”, the Options dialog is popped up.



Click “Show Configuration folder” to open explorer, the default is “C:\ProgramData\CMUV\DVBSky Player.” Close DVBSky player! Copy the updated file to its “Transponders” directory to overwrite the old one.

Please note that it need to close DVBSky player before copy the update file. If you copy the updated file with DVBSky player running, DVBSky player will write back the old one when it is closed.

Restart DVBSky player to scan this new transponder.

## 14. Further support

Please visit [www.dvbsky.net](http://www.dvbsky.net) to download the latest software and driver.

Contact [support@dvbsky.net](mailto:support@dvbsky.net) to get further support.