

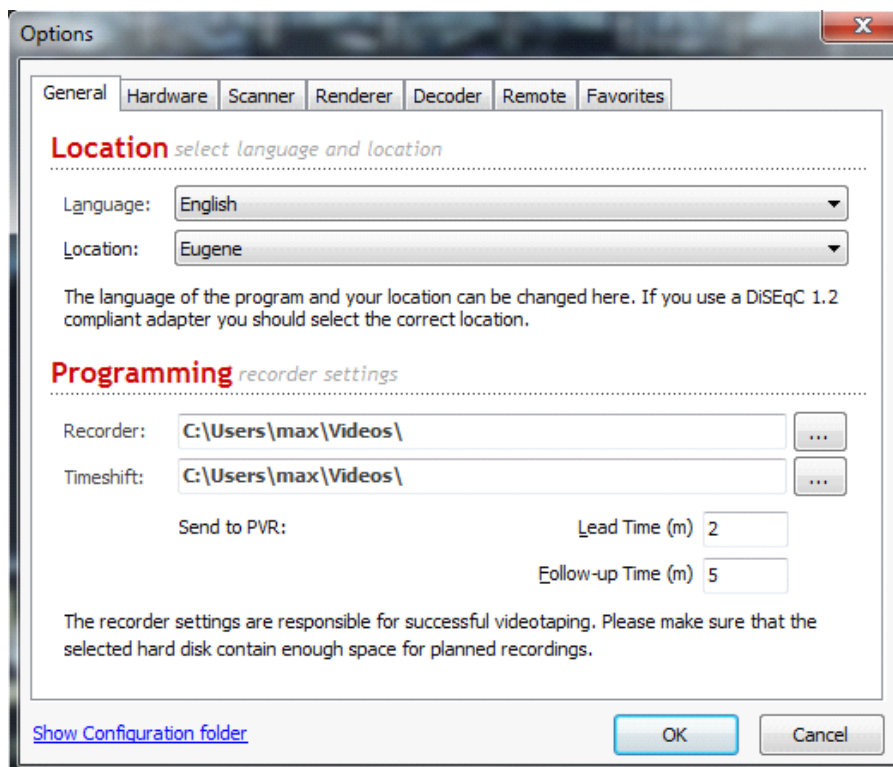
## How to config DVB-T2 MultiPLP frequency

### Precondition:

**To let it work, please install the latest driver.**

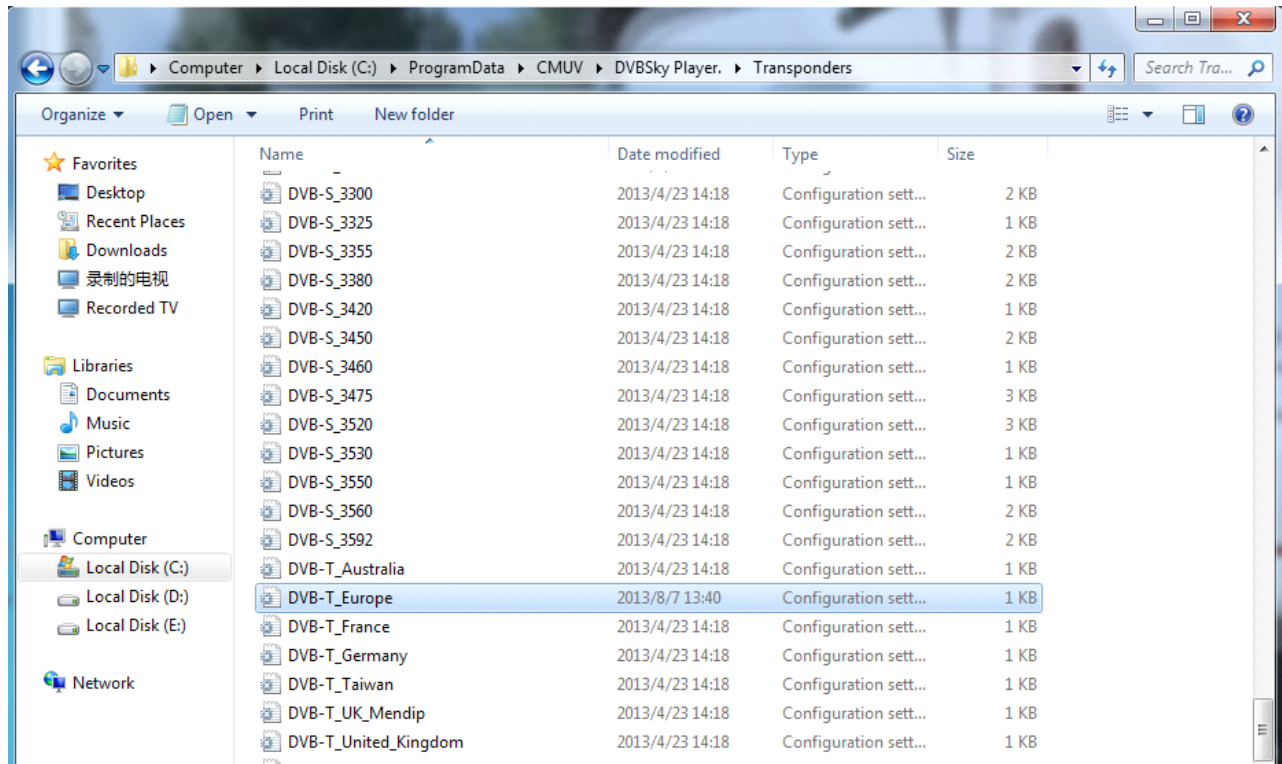
**If your DVB application supports our MultiPLP interface, this trick config does not need at all.**

1> Click “**Show Configuration folder**” in the Options Dialog.



## How to config DVB-T2 MultiPLP frequency

2> Locate the DVB-T transponders file, and open it.



## How to config DVB-T2 MultiPLP frequency

3> Add the frequency of DVB-T2 multi-plp carrier.

```
38=682000,8
39=690000,8
40=698000,8
41=706000,8
42=714000,8
43=722000,8
44=730000,8
45=738000,8
46=746000,8
47=754000,8
48=762000,8
49=770000,8
50=778000,8
51=786000,8
52=794000,8
53=802000,8
54=810000,8
55=818000,8
56=826000,8
57=834000,8
58=842000,8
59=850000,8
60=858000,8
61=1618000,8
62=2618000,8
63=3618000,8
```

**1618000,8 for plp 1 in 618MHz carrier.**

**2618000,8 for plp 2 in 618MHz carrier.**

....

**If you have plp 3 in 474MHz carrier, the following line to add:**

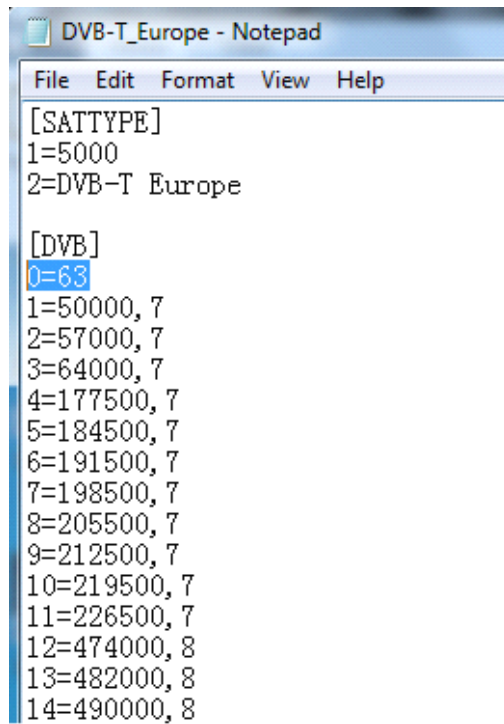
**3474000,8**

**The method: add the plp number before the actual frequency carrier.**

**Please note that no need to add the frequency for plp 0, it is listed in the frequency table already.**

## How to config DVB-T2 MultiPLP frequency

4> Change the number of frequency and save the file.



```
DVB-T_Europe - Notepad
File Edit Format View Help
[SATTYP]
1=5000
2=DVB-T Europe

[DVB]
0=63
1=50000, 7
2=57000, 7
3=64000, 7
4=177500, 7
5=184500, 7
6=191500, 7
7=198500, 7
8=205500, 7
9=212500, 7
10=219500, 7
11=226500, 7
12=474000, 8
13=482000, 8
14=490000, 8
```

~~~~~